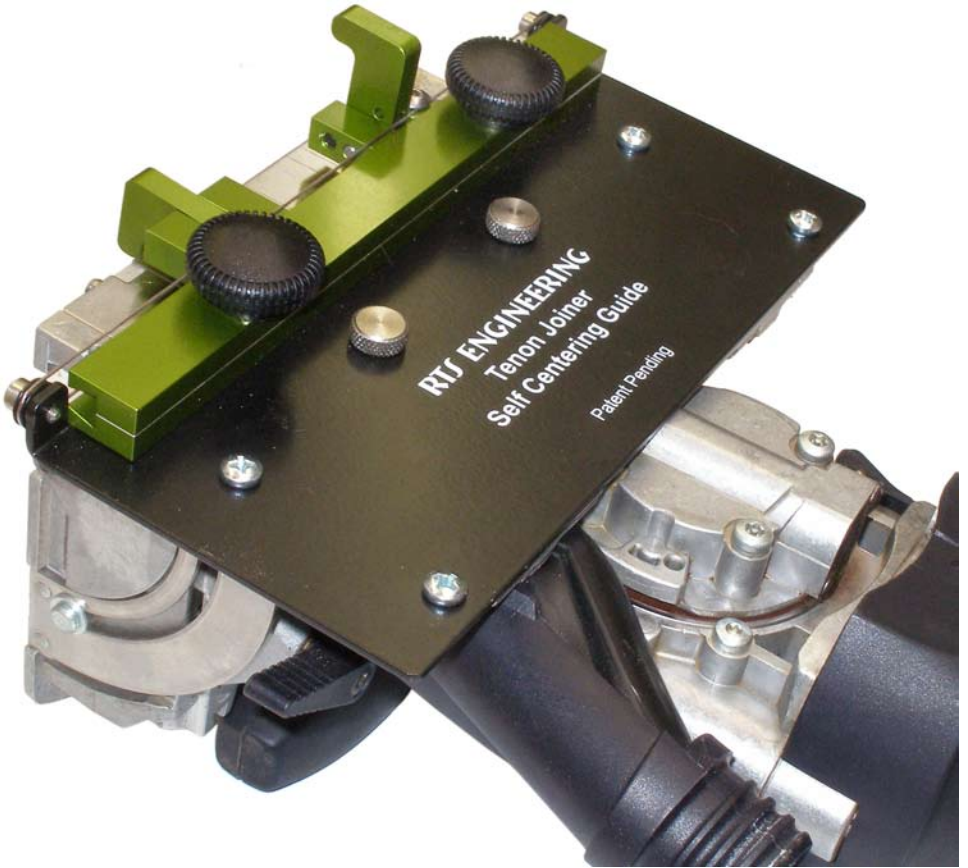


RTS ENGINEERING

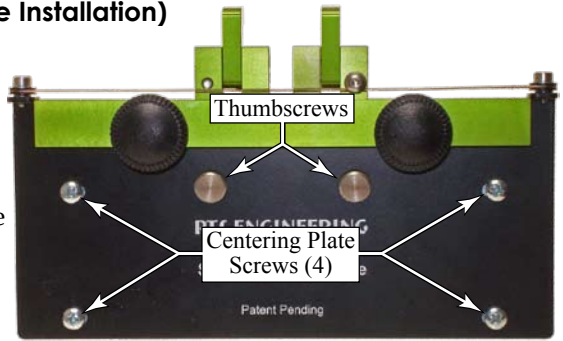
**SCG-10
Self Centering
Guide Stop**



Owner's Manual

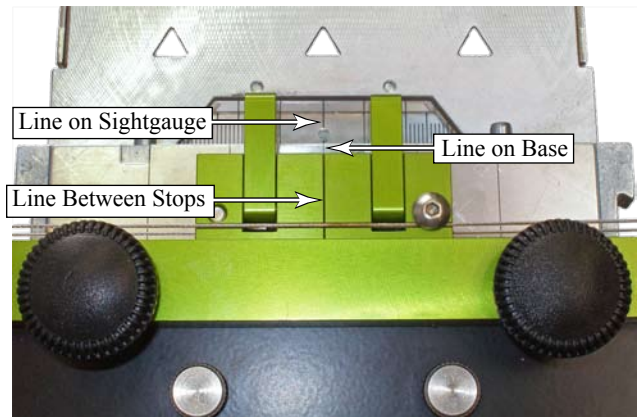
Centering Plate Setup (First Time Installation)

The thumbscrews hold the SCG-10 to your Domino machine, but the Centering Plates ensure that it is positioned correctly. Each Domino machine may have a slight variation in the center of the mortise with respect to the fence. The centering plates are adjustable to allow you to adjust your SCG-10 to be perfectly centered on your specific Domino.



1. Turn the Domino joiner upside down, place the SCG-10 on the base, and begin tightening the two thumbscrews to secure it in place.

2. Just before the thumbscrews are fully tightened, make sure the SCG-10 is straight and centered with the lines on the base and sight-gauge of the joiner.

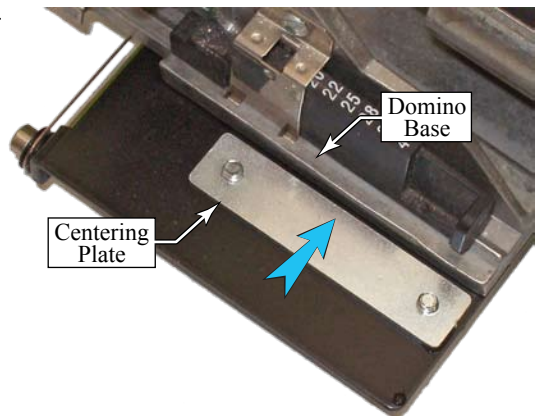


Note: The line on the Domino base is not adjustable, but the sight-gauge is adjustable. If the lines on your Domino joiner are not perfectly centered about the mortise location, then perform the sightgauge calibration procedure described in the *Domino Supplemental Owner's Manual* (available at www.dominoguide.com/Domino_DF_500.pdf).

3. When the lines are lined up, finish tightening the two thumbscrews to hold the SCG-10 in position.

4. Loosen the four Centering Plate mounting screws and slide the two centering plates inward so they are firmly pressed against the sides of the Domino base.

5. Starting from the upper right hand screw (as viewed in the first picture above) and working in a clockwise sequence, re-tighten the Centering Plate screws. (This tightening sequence helps keep the plates tight to the base as you tighten the screws.)



Installing and Removing the Guide

Once the Centering Plates are adjusted, the SCG-10 guide may be installed or removed from your Domino joiner without any further adjustment. The two mounting thumbscrews are captive to the SCG-10's base to prevent them from getting lost. (The thumbscrews may also be unscrewed from the base if necessary.) When removing the guide, you may find it easier to loosen one thumbscrew slightly, and then loosen the other. Alternating back and forth will keep the thumbscrews captive in the baseplate.

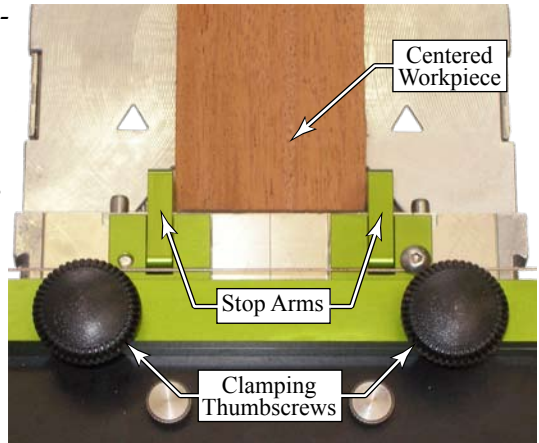
Stop Position Setup



Caution: Make sure both clamping thumbscrews are fully tightened or fully loosened. Moving a Stop or using the guide while one thumbscrew is tight and the other loose will stress the cable and may cause it to break.

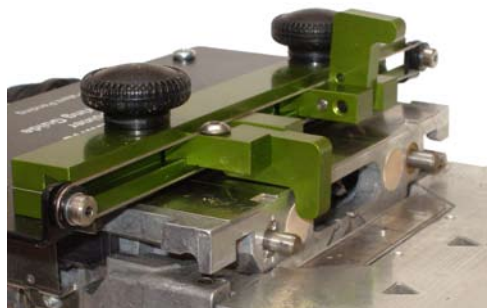
The stop positions may be set to any distance from the mortising position between $\frac{3}{8}$ " to $2\frac{5}{8}$ " ($\frac{3}{4}$ " to $5\frac{1}{4}$ " total). When making a standard "L-type" butt joint, it is not necessary to have your mortise perfectly centered on the end-workpiece, but if desired, the SCG-10 can be quickly set for this by using your workpiece as a spacing jig, as shown below.

1. Loosen both Clamping Thumbscrews, and make sure both stops slide freely.
2. Slide the two stops to the desired position. If desired, you may use one of the workpieces to set the desired spacing.
3. Firmly tighten both Clamping Thumbscrews. The stops use a sliding dovetail clamp, so tightening the thumbscrews draws the stop in and also clamps them down.



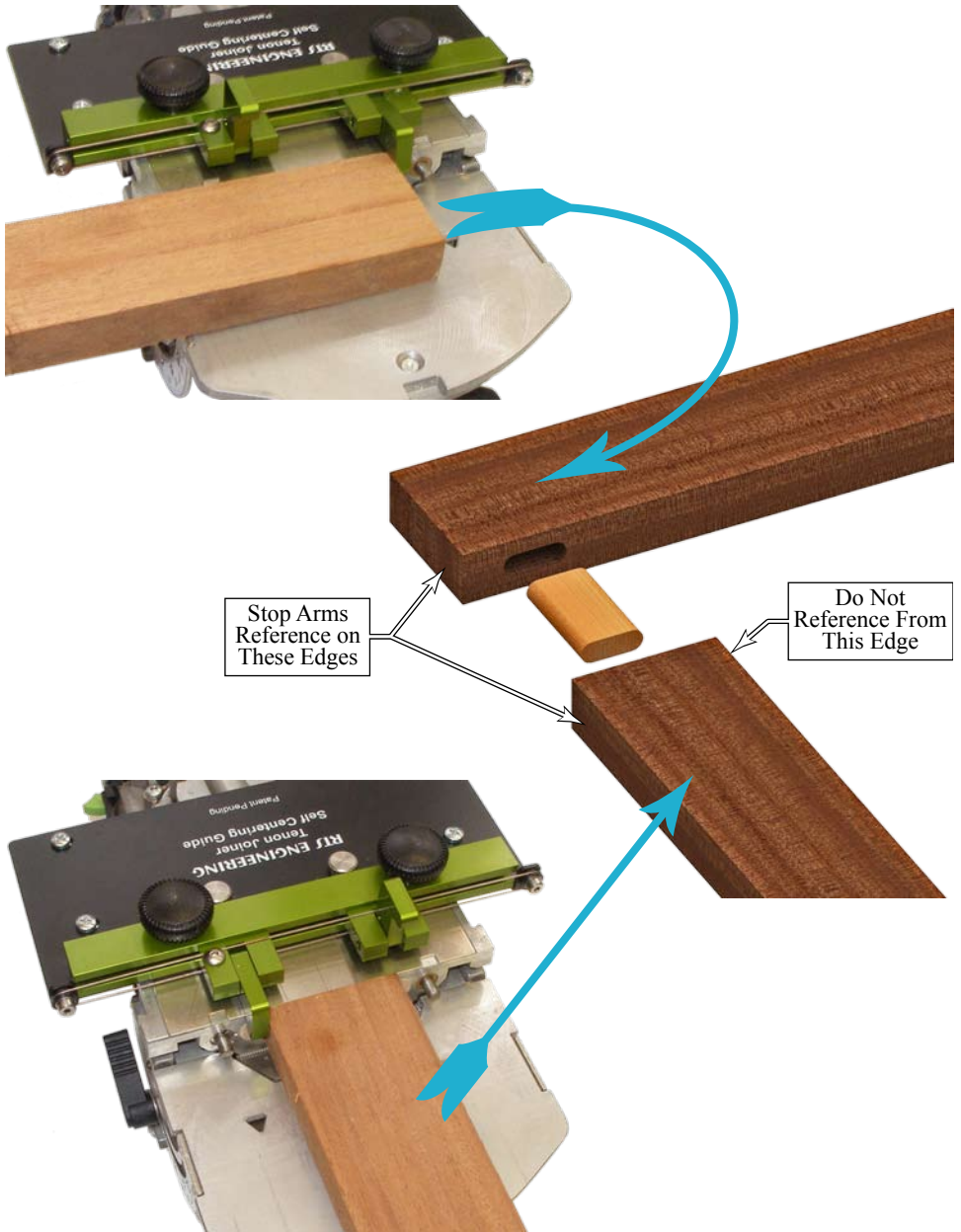
Using the Stops

The stop arms rotate up and down to engage the edge of the workpiece or store out of the way. The stops are used one at a time to control the position of the edge of the workpiece to maintain a specific distance from the mortising location.



Example Mortise: L-Type Butt Joint

When mortising a joint, use both the right and left stops so that both workpieces are referenced from the same side.



Copyright 2011, RTS Engineering

Rick Christopherson
www.dominoguide.com
Patent Pending